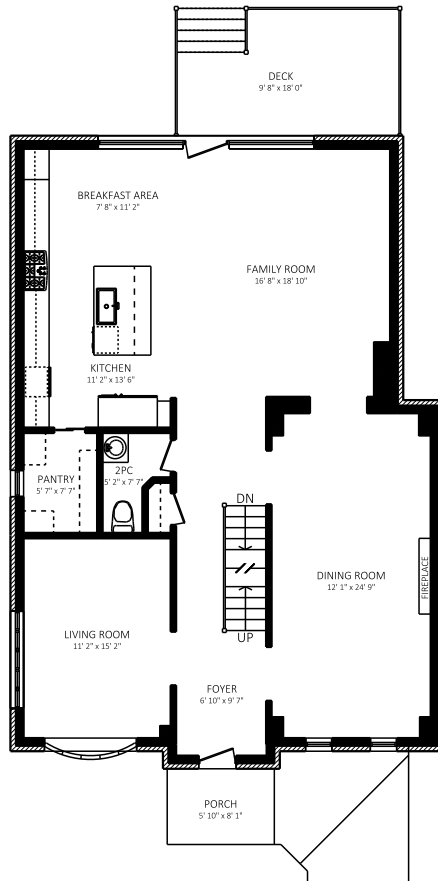
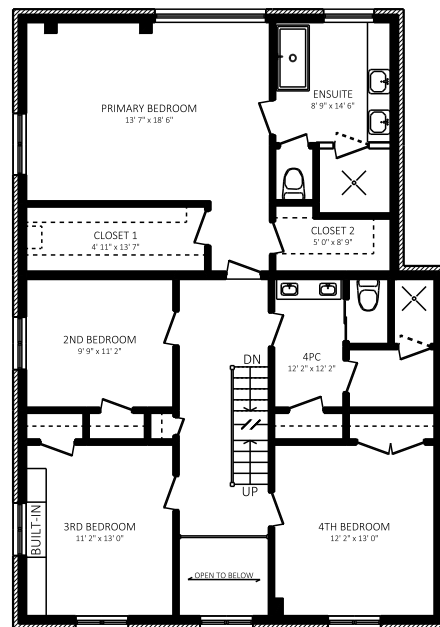


217 LONSMOUNT DRIVE

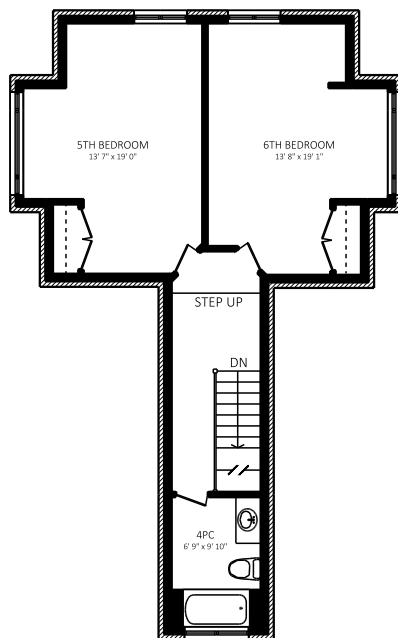
TORONTO, ONTARIO



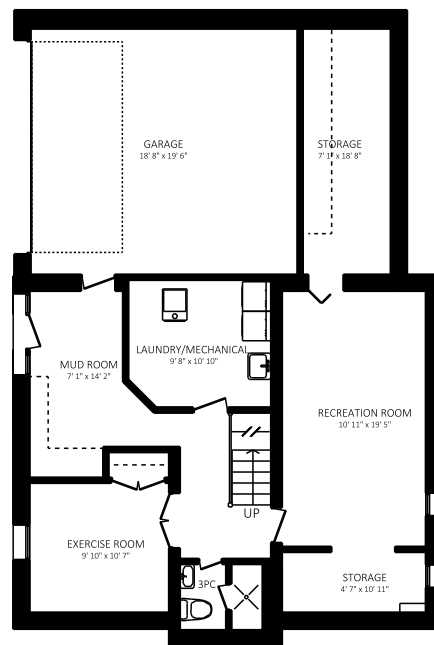
MAIN FLOOR
1490 SQUARE FEET APPROX.
8' CEILING



SECOND FLOOR
1450 SQUARE FEET APPROX.
8' CEILING



THIRD FLOOR
807 SQUARE FEET APPROX.
10' CEILING



LOWER LEVEL
1094 SQUARE FEET APPROX.
7' CEILING

All Measurements Should Be Considered Approximate Until Verified By Buyer.
Listing Broker And Seller Assume No Responsibility For The Accuracy Of Any
Information Shown.